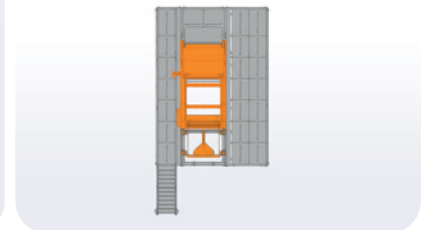
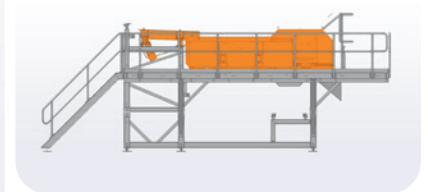
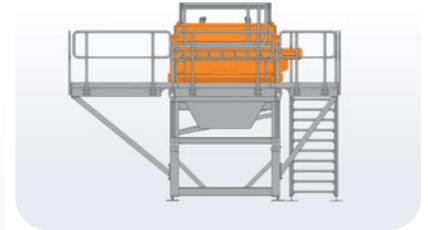
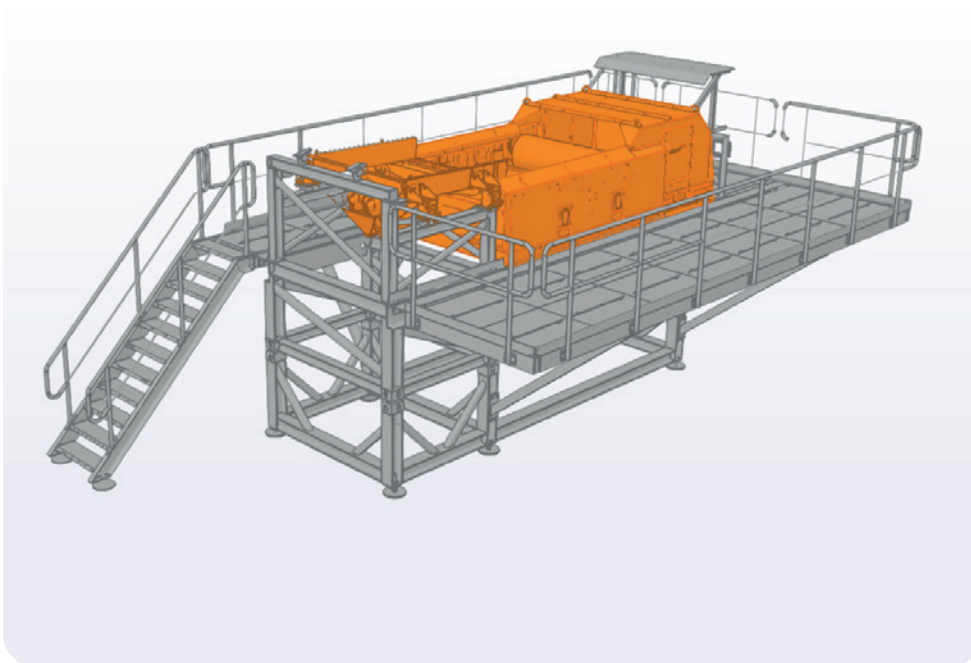


## R1: Single Eddy Current module



### Description

- Eddy Current separator, coarse-, medium coarse or fines suitable (IBA-proof, galvanized frame and stainless steel platework)
- Container-frame based construction for easy set-up, breakdown and transportation
- Totally galvanized construction (IBA-proof!)
- (De-)mountable stairways and platforms
- Control cabinet IP65 'outside' version provided with TRS Modular Plant Control System (MPCS), for stand-alone control or in combination with other modules.

### Optional

- Discharge conveyors for separated materials

### Applications

- IBA (bottom ash) – waste – metals - shredder residues

### Dimensions

#### Transport:

1 truck load

#### Operational:

8,0 x 3,0 x 3,0m (l x w x h)

### Weight

Ca. 9t

### Installed power

12kW

